



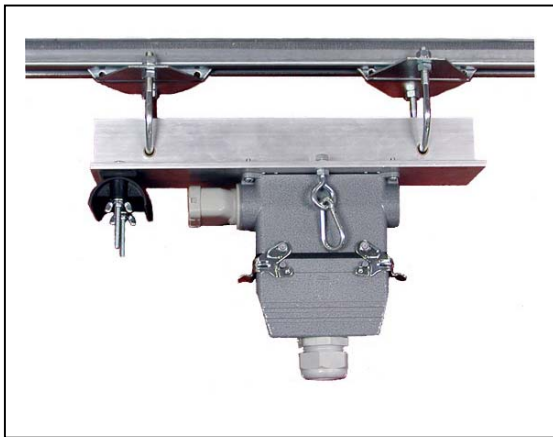
DUCT-O-WIRE COMPANY
Price List CT-0302
QUICK PLUG CONTROL TROLLEY
AND COMPONENTS

Prices subject to change without notice
 F.O.B. Duct-O-Wire Co. Corona, CA or Oconomowoc, WI

Terms: Net 30 days
 Minimum Net Billing: \$25.00

Effective February 1, 2003

Complete Control Trolley With Pendant Station Quick Disconnect



Complete Solutions for Heavy Duty Control Trolley Applications.

- Rugged Metal Trolleys for Smooth Operation
- Cost Savings Over Conventional Plug & Receptacle
- Strain Relief Quick Disconnect Links Included
- Extra Hoods and Connectors Available for Spares
- Available for 14 Ga. C-Track, 12 Ga. Heavy C-Track, Alumina-Track and I-Beam Applications.
- Wear Point Bushings for Long Life
- Plug and Receptacle Components UL/CSA Rated
- Pre-wire Available for Pendant and Quick Plugs
- Plug & Receptacle Components Available, Separately - Consult Factory.

14 Gauge C-Track Quick Plug Control Trolleys

Part Number	Recommended Pendant Cable Size	List Price
CT-TRC1-8	RPC-816	Call Factory
CT-TRC1-16	RPC-1216 RPC-1616	Call Factory
CT-TRC1-24	RPC-2416	Call Factory

12 Gauge C-Track Quick Plug Control Trolleys

Part Number	Recommended Pendant Cable Size	List Price
CT-TRC22-8	RPC-816	Call Factory
CT-TRC22-16	RPC-1216 RPC-1616	Call Factory
CT-TRC22-24	RPC-2416	Call Factory

Continued on page 2.

Aluma-Track Quick Plug Control Trolley

Part Number	Recommended Pendant Cable Size	List Price
CT-TRC6-8	RPC-816	Call
CT-TRC6-16	RPC-1216 RPC-1616	Call
CT-TRC6-24	RPC-2416	Call

S3 and S4 I Beam Quick Plug Control Trolley (Standard Duty)


Part Number	Recommended Pendant Cable Size	List Price
CT-TRC12-8	RPC-816	Call
CT-TRC12-16	RPC-1216 RPC-1616	Call
CT-TRC12-24	RPC-2416	Call

S3 and S4 I Beam Quick Plug Control Trolley (Heavy Duty)

Part Number	Recommended Pendant Cable Size	List Price
CT-TRC10-8	RPC-816	Call
CT-TRC10-16	RPC-1216 RPC-1616	Call
CT-TRC10-24	RPC-2416	Call


Plug and Receptacle Components

Quick Plug Accessories

	Part No.	Description	List Price
	CT-4P2C	Connector for Power & Control w/ 4 Power (65A) & 2 Control. Fits CT-16 Hood & Base	Call
	CT-10-F	Receptacle for CT-8 Panel Base	Call
	CT-10-M	Matching Plug for CT-10-F	Call
	CT-16-F	Receptacle for CT-16 Panel Base	Call
	CT-16-M	Matching Plug for CT-16-F	Call
	CT-24-F	Receptacle for CT-24 Panel Base	Call
	CT-24-M	Matching Plug for CT-24-F	Call
	CT-FCG1216	Flat Cable Bushing for FC-1216 Cable	Call
	CT-HSCG	Flat Cable Bushing with Heat Shrinkable Tubing for Outdoor Applications	Call
	CT-8 Cover	Dust Cover Hood for CT-8 Base	Call
	CT-16 Cover	Dust Cover Hood for CT-16 Base	Call
	CT-24 Cover	Dust Cover Hood for CT-24 Base	Call
	CT-SR HDW KIT	Strain Relief Hardware Kit (Snap-Links, Eye Bolts, Thimbles, and Cable Clamps)	Call

Base Kits


(Includes Base, Receptacle, and Flat Cable Bushing for FC-816 Festoon Cable)

	Part Number	Recommended Flat Cable Size	List Price
	CT-8 Base Kit	(1) FC-816	Call
	CT-16 Base Kit	(2) FC-816 *	Call
	CT-24 Base Kit	(3) FC-816	Call

*CT-FCG1216 Bushing for use with FC-1216 Festoon Cable.


Panel Base

(For Enclosure or Panel Mounted Control Applications. Add Desired Receptacle)

	Part Number	Cut-Out Size	List Price
	CT-8 Panel Base	1.375 in. x 2.5 in.	Call
	CT-16 Panel Base	1.375 in. x 3.375 in.	Call
	CT-24 Panel Base	1.375 in. x 4.375 in.	Call

Hood Kits

(Consists of Hood, Connector and Round Cable Bushing for Plug Side Quick Disconnect.)

	Part Number	Recommended Pendant Cable Size	List Price
	CT-8 Hood Kit	RPC-816	Call
	CT-16 Hood Kit	RPC-1216 RPC-1616	Call
	CT-24 Hood Kit	RPC-2416	Call

Factory Pre-wire Net Charge for Trolley Accessories

(Cable and components purchased separately.)

Part Number (Cable Rating)	Description	(Application)	Net Price
RPC-816 (600 V.A.C.)	16 AWG	8 (120 V.A.C.)	Call
RPC-1216 (600 V.A.C.)	16 AWG	12 (120 V.A.C.)	Call
RPC-1616 (600 V.A.C.)	16 AWG	16 (120 V.A.C.)	Call
RPC-2416 (600 V.A.C.)	16 AWG	24 (120 V.A.C.)	Call

Note: For Receptacle side pre-wire pricing, consult factory.

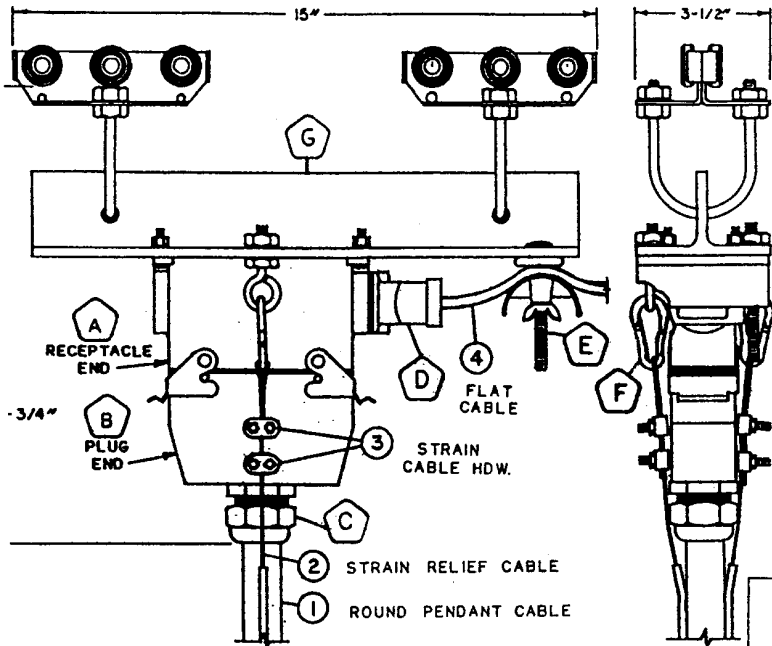
JUNCTION BOX/CONTROL TROLLEY WIRING CHARGE**

COMPONENT	LIST WIRING CHARGE*
FC-BX1 JUNCTION BOX	Call
FC-BX2 JUNCTION BOX	Call
CT CONTROL TROLLEY	Call
CT PLUG OR RECEPTACLE	Call



* Duct-O-Wire will connect the proper cable to each component, attach the strain cable, if applicable, and provide a color-coded wiring diagram to assist the installer at the jobsite.

** Flat cable wiring charges are based on the individual component ends, not the number or size of cables.



INCLUDED COMPONENTS

- A. RECEPTACLE
- B. PLUG
- C. ROUND CORD GRIP
- D. FLAT CABLE GLAND
- E. SADDLE AND FLAT CABLE CLAMP
- F. SNAP LINK
- G. TROLLEY ASSEMBLY

PART NUMBER	MAX. No. OF LEADS
CT-TRCX-8	10 + GND.
CT-TRCX-16	16 + GND.
CT-TRCX-24	24 + GND.

X= 1=STD. 14 Ga. C-TRACK
 6=ALUMATRACK
 10=H.D. S3 & S4 I-BEAM
 12=STD. S3 & S4 I-BEAM
 22=H.D. 12 Ga. C-TRACK

OPTIONAL 'POWER & CONTROL' CONNECTOR # CT-16-4P2C



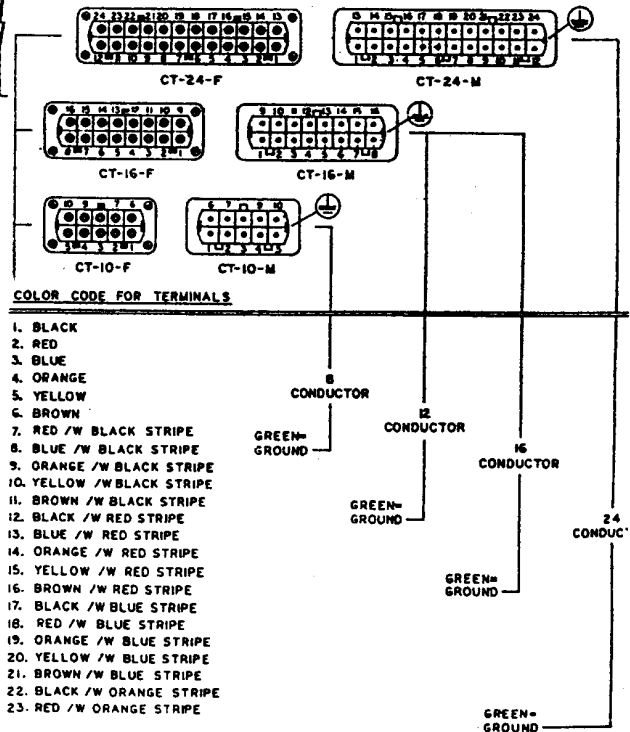
4 POWER CONNECTORS FOR # 4 CABLE
 2 CONTROL CONNECTORS FOR # 16 CABLE
 1 GROUND

RECEPTACLE END:

MOUNTS ON CONTROL TROLLEY AND HAS SOCKETS.

PLUG END:

MOUNTS ON PENDANT DROP AND HAS PINS.



P.O. Box 519
 Corona, California 92878-0519
 Phone: 909-735-8220; 800-543-3885; 800-735-1922
 Fax: 909-735-2372; 800-752-6001; 800-735-0857

1351 W. Second St.
 Oconomowoc, Wisconsin 53066
 Phone: 262-567-2288; 800-434-0062
 Fax: 262-567-0857