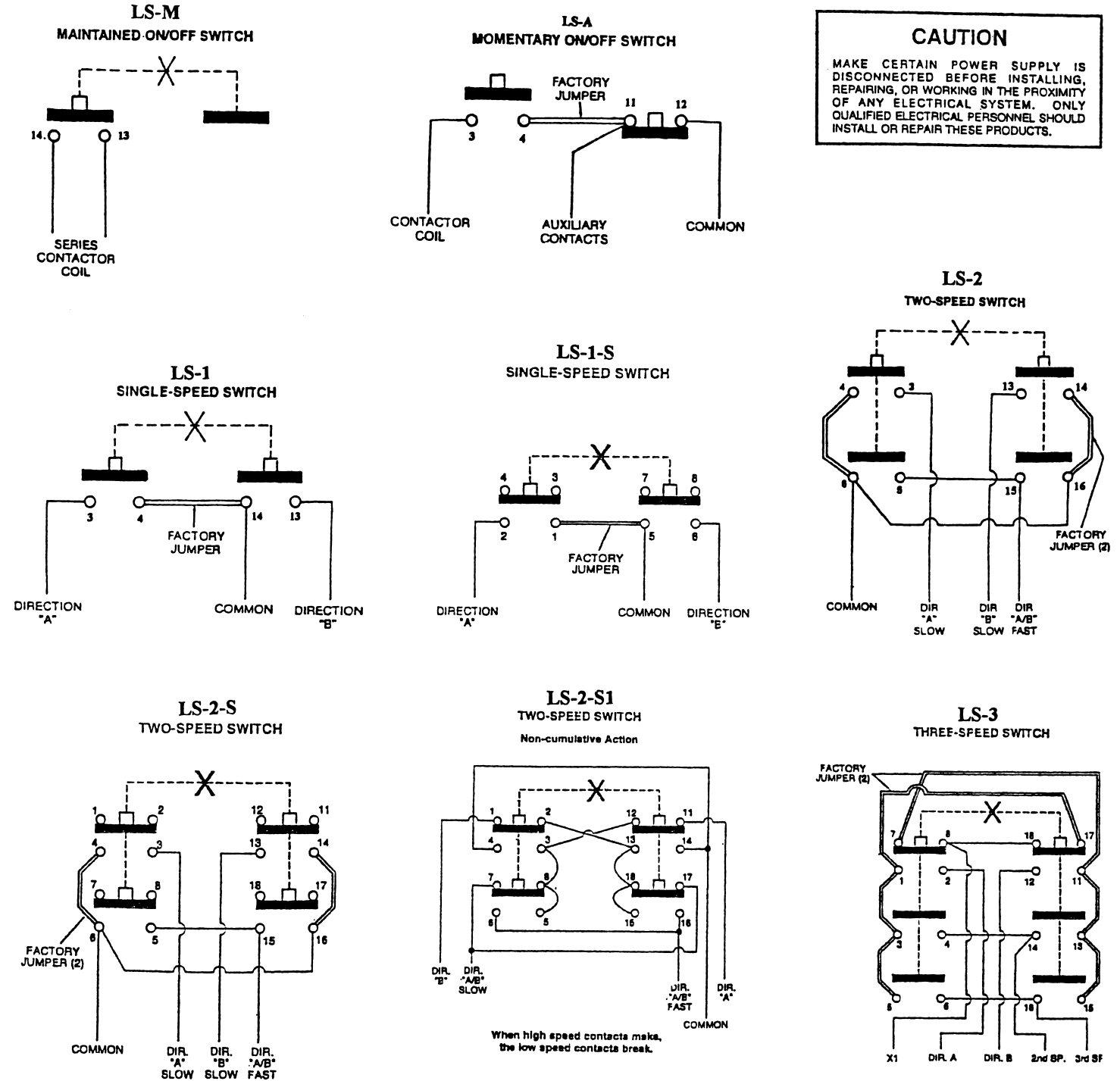
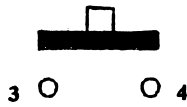




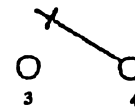
## ‘L’ SERIES PUSH BUTTON STATION WIRING DIAGRAMS



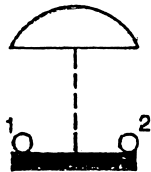
1. Be sure to follow closely the wiring diagrams furnished by the manufacturer of equipment to be controlled.
2. When installed, check all motions of equipment to ensure that the pendant push button station has been wired properly.



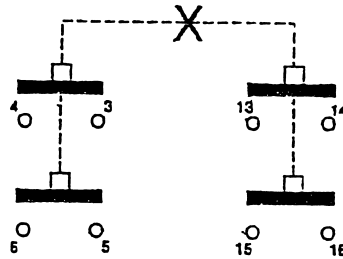
**LS-MS**  
Momentary  
Switch



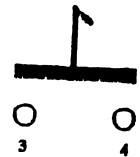
**LS-6**  
Toggle  
Switch



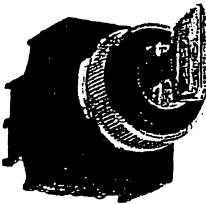
**LS-STMM**  
E-STOP  
Push-OFF  
Twist Pull-ON



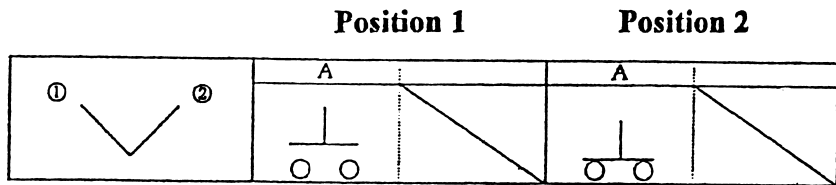
**LS-MS-2A**  
2-DPST Switches  
Mech. Interlock



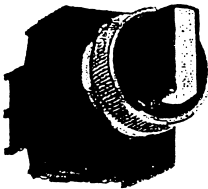
**LS-6A**  
Alternating  
Switch  
Push-ON  
Push-OFF



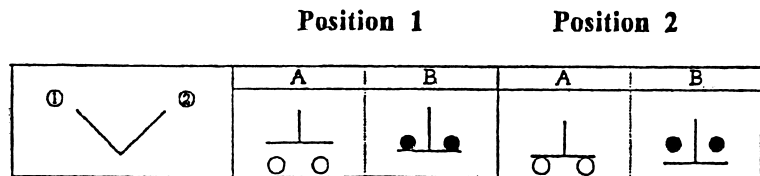
**LS-7**  
Key  
Switch



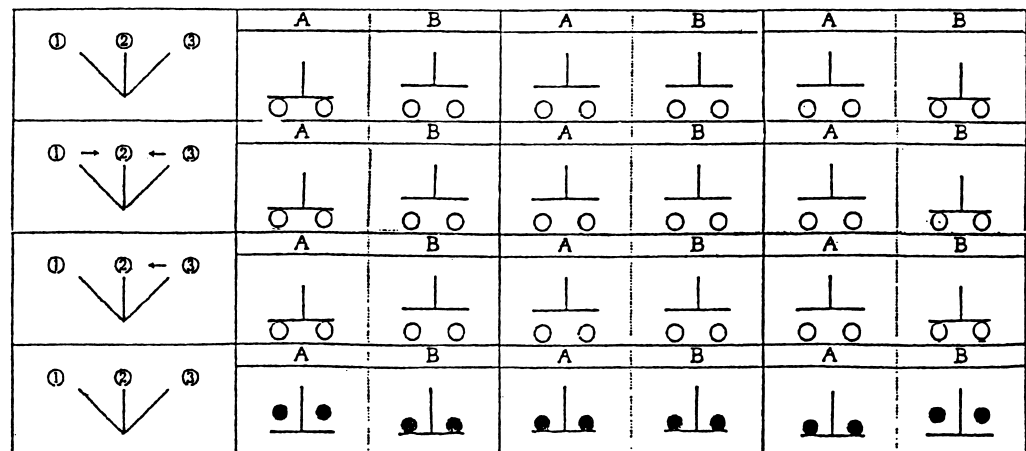
From the front of the operator the A switch is on the left and the B switch is on the right.



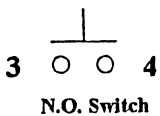
**LS-11**



Position 1      Position 2      Position 3



**LS-16**



**LS-13**

**LS-18**



**LS-12**

The arrow indicates spring return to the center on release of the operator.

The A & B switch designations are for left or right switch block location not nameplate identification.