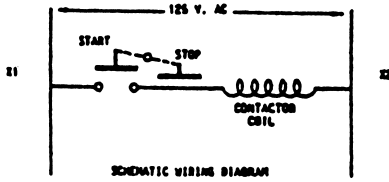




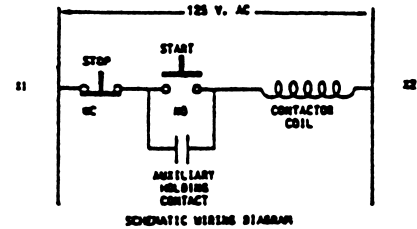
P.O. Box 519	1351 W. Second Street	379 Davis Road, Unit #3
Corona, California 92878-0519	Oconomowoc, Wisconsin 53066	Oakville, Ontario, Canada L6J 2X2
Phone: 909-735-8220; 800-543-3885; 800-735-1922	Phone: 262-567-2288	Phone: 905-844-1791; 800-361-9473
Fax: 909-735-2372; 800-752-8001; 800-735-0857	Fax: 262-567-0857	Fax: 905-844-2533; 800-663-0933

J & RPS - SERIES PUSH BUTTON INSERTS

WIRING DIAGRAMS

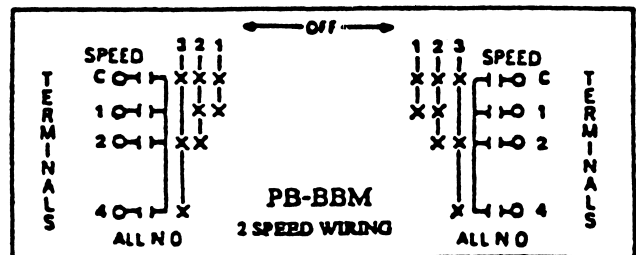
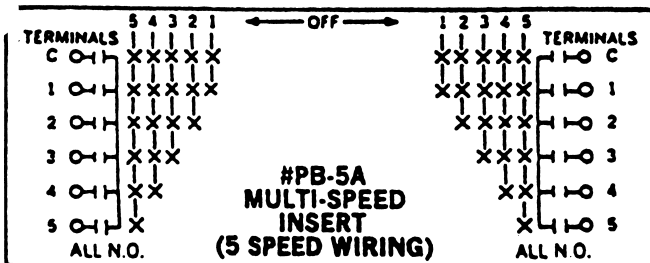
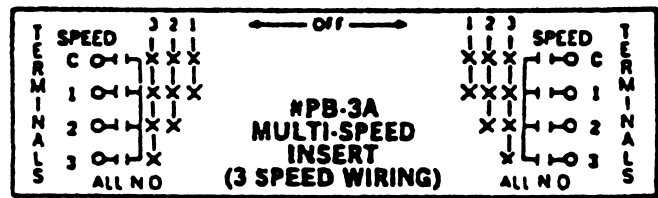
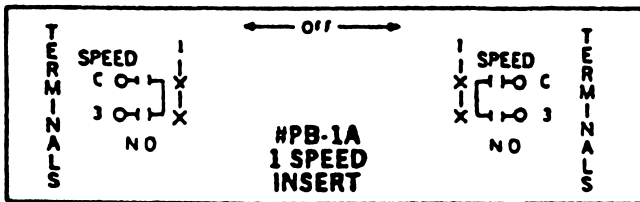


MAINTAINED START-STOP INSERT
PB-STM, PB-STMA, PB-STMB



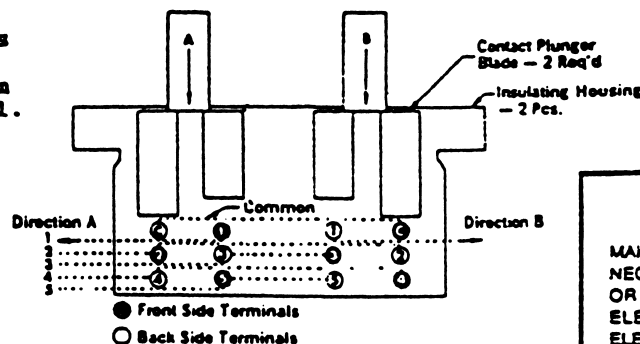
MOMENTARY START-STOP INSERT
PB-ST, PB-STA, PB-STB

SCHEMATIC OPERATIONAL DIAGRAMS (MULTI-SPEED INSERTS ARE ALL PROGRESSIVE STEP)



PB Switch Rating: 1 Amp per Contact, 125VAC, NEMA 4.

Mechanical interlock models
PB-1B, PB-3B, PB-5B, etc.
use the same wiring diagram
as their respective A model.



MULTI-SPEED INSERT #PB-5A

CAUTION
MAKE CERTAIN POWER SUPPLY IS DISCONNECTED BEFORE INSTALLING, REPAIRING, OR WORKING IN THE PROXIMITY OF ANY ELECTRICAL SYSTEM. ONLY QUALIFIED ELECTRICAL PERSONNEL SHOULD INSTALL OR REPAIR THESE PRODUCTS.

NOTES: Terminals for single multi-speed push button inserts are NOT all found on same side of push button block. Terminal C, 3 and 4 are on one side of the block while terminals 1, 2, and 5 are found on the opposite side. (See Terminal Board Layout Above).

The switches should be electrically interlocked in the control panel through the reversing contactor.
Wire the direction into the number 1 terminal.

Pushbutton Insert Rating: 125 Volts A.C. Max., Size # 2 Contactors or Smaller